

Using the London Grid for Learning Media Streaming Server.

The LGfL Media Server gives schools connected to the LGfL the ability to stream from their school live or pre-recorded video and audio material.

An example of this can be seen at: <mms://media.lgfl.org.uk/londonchallenge>

To utilise the LGfL Microsoft Media Server you will need to complete the following steps:

Step 1 – Firewall Change

You will need to arrange for the PC that you wish to stream from to have a public IP address that has port TCP 7007 on your firewall open to IP address 212.85.23.35 (the media server). This can be done by completing a SCR to Equinox. (Your LEA will be able to assist you with this)

NOTE: This process can take up to 3 days

Step 2 – Download MS Media Encoder

You will need to download Microsoft Windows media Encoder. This is a free download available from Microsoft.

<http://www.microsoft.com/downloads/details.aspx?FamilyID=5691ba02-e496-465a-bba9-b2f1182cdf24&DisplayLang=en>

Step 3 – Configure a Media folder and IP address access

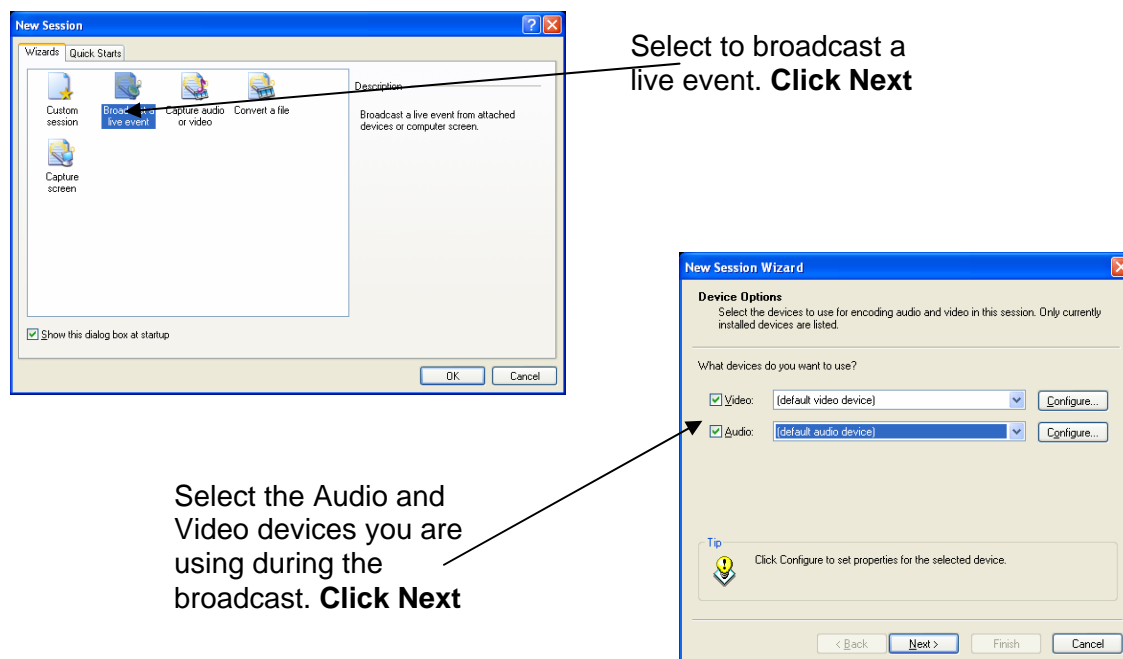
Before you do this you will need to arrange for a streaming folder to be created on the system. (Example 'school_play'). To do this send an email to mediaserver@lgfl.org.uk including the IP address you are streaming out from.

(If you are not aware of your public IP address, this can be checked at www.whatismyip.com)

Step 4 – Configure MS Media Encoder

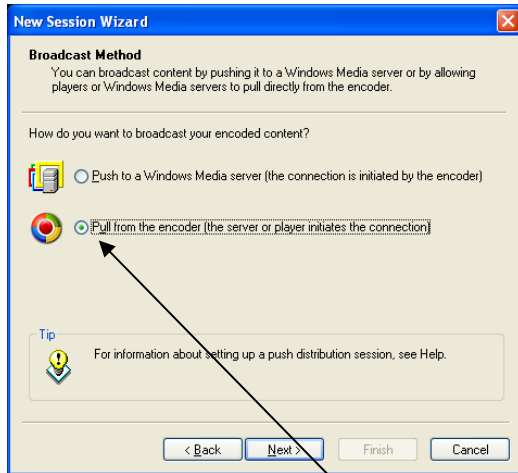
Configure your local copy of the Windows Media Encoder to encode to the LGfL Media Server.

Install and run the copy of MS Media Encoder you downloaded from Microsoft

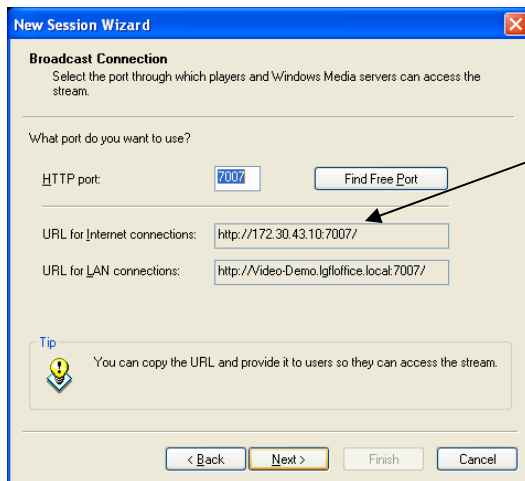


Select to broadcast a live event. **Click Next**

Select the Audio and Video devices you are using during the broadcast. **Click Next**

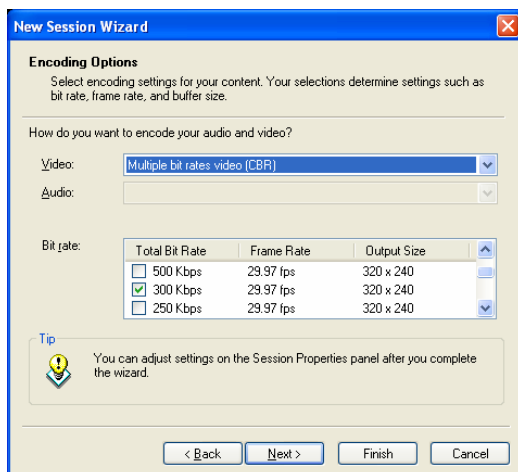


Select to pull from the encoder. **Click Next**

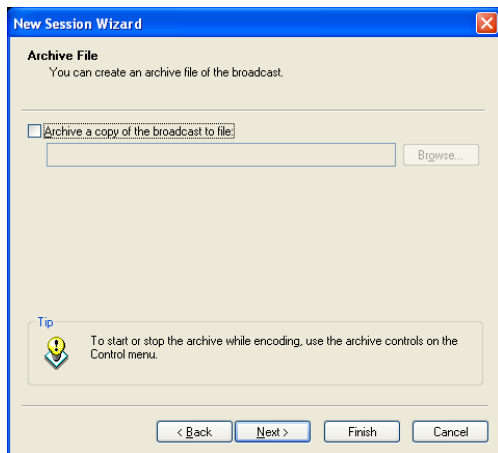


Note the port number

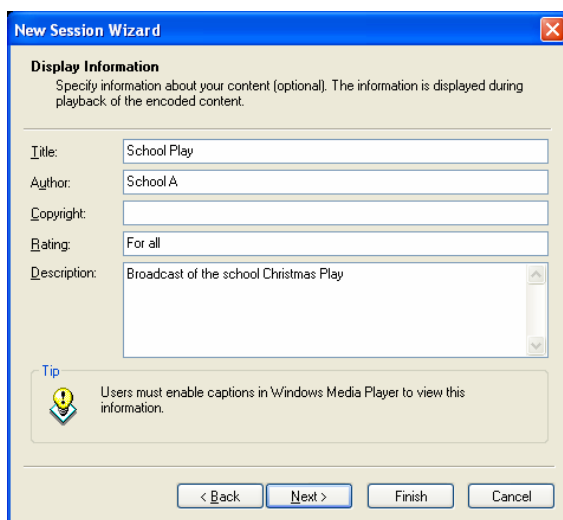
The broadcast selection screen will be completed for you by the Wizard. **Click Next**



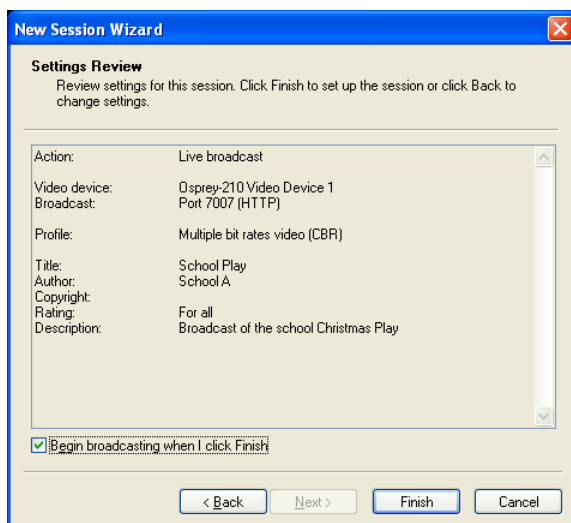
Select the Bit Rate required for the media stream. **Click Next**



Select this box if you also want to record a copy of the stream to file. **Click Next**

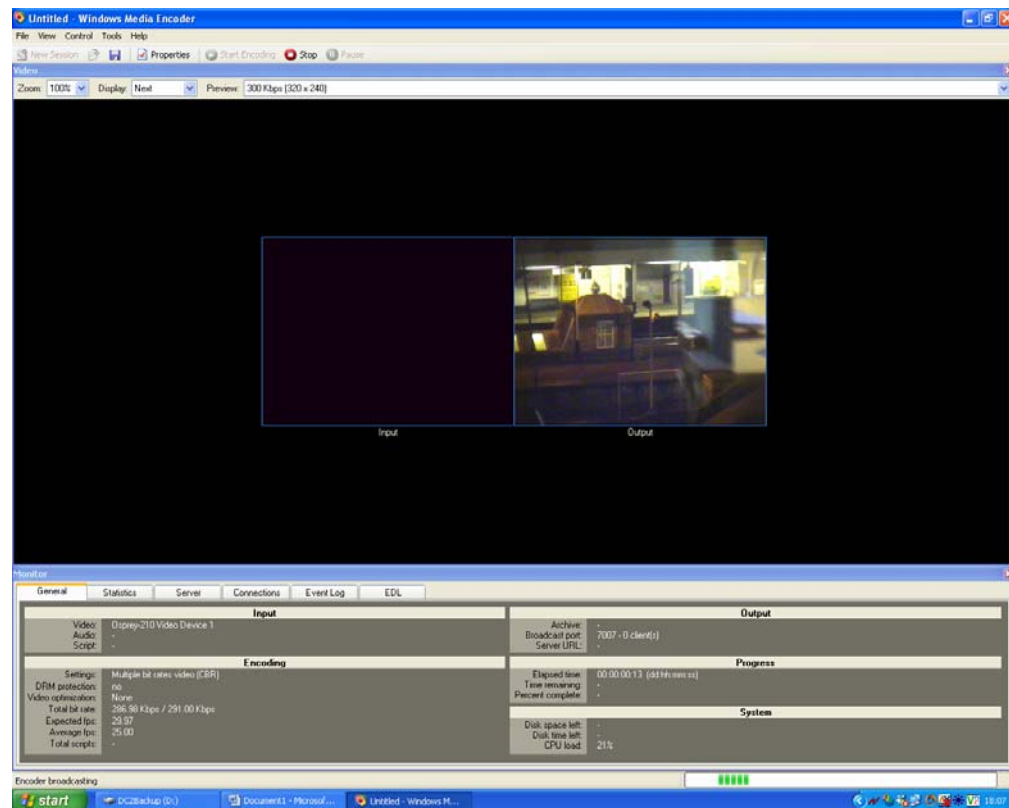


Fill in some details. These are displayed in Windows media Player during the broadcast. **Click Next**



An outline of your options will be displayed. **Click Finish**

You should now be presented with a screen similar to the one below with your video stream displayed.



For additional support on this service email: mediaserver@lqfl.org.uk

Note: Please ensure that you comply with all copyright laws when using this streaming server.